

PanelView Plus 6 Terminals - 700 to 1500

This platform use modular components with value-added options for flexible system configuration. These components are usable across the entire PanelView Plus 6 platform and install with minimal effort:

- Color display modules ranging from 6.5 to 15-inches in size with either key, touch screen, or combination key/touch-screen input
- Windows CE logic modules providing desktop access
- Optional communication modules for network communication



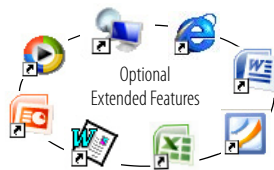
Configured terminals with a display module and logic module can be ordered as a single catalog number or as separate components for field installation.

A high-bright display for outdoor use, plus conformal-coated and marine-certified components, extend this platforms ability to operate in environments with even more stringent and varying requirements.

The core component of this platform is the high-performance logic module that runs a closed or open Windows CE desktop environment with optional, extended features and file viewers. System integrators and OEMs can configure and deploy systems that allow or restrict desktop access.

Logic Module Features

Features	Description
High memory capacity	512 MB nonvolatile memory and 512 MB RAM
Power input	AC or DC
Network interface	For optional DH+, DH-485, or ControlNet communication module
Communication ports	Ethernet, RS-232 serial
USB ports	2 USB host ports for connecting a USB mouse, keyboard, printer, and USB drives that are hot swappable 1 USB device port for connecting a host personal computer
Secure Digital (SD) card slot	Hot-swappable card slot supports 1784-SDx SD cards for transferring files, upgrading firmware, or logging data
Operating system	<p>All terminals run the Windows CE 6.0 operating system (OS) providing OS functionality needed for most users needs:</p> <ul style="list-style-type: none"> • FTP server • VNC client/server • PDF reader • Active X controls • Third-party device support <p>Additional functionality is available by ordering terminals with optional, extended features:</p> <ul style="list-style-type: none"> • Internet Explorer web browser • Remote desktop connection • Media player • Microsoft file viewers for PowerPoint, Excel, and Word • WordPad text editor
FactoryTalk View software	<ul style="list-style-type: none"> • FactoryTalk View Machine Edition Station (runtime) software, version 6.0 or later, is preloaded and activated on each terminal • Single license support for FactoryTalk ViewPoint software, version 1.2 or later, gives remote users access to a terminal's displays via standard web browser • HMI applications are developed with FactoryTalk View Studio for Machine Edition software, which is purchased separately



Product Selections

Bulletin	Input Type	Display Size	Display Type	Communication	Power	Operating System	Special Option
2711P-	K = Keypad T = Touch B = Keypad/Touch	7 = 6.5 in. 10 = 10.4 in. 12 = 12.1 in. 15 = 15 in.	C = Color	4 = Ethernet, RS-232, (2) USB	A = AC D = DC	8 = Windows CE 6.0 9 = Windows CE 6.0 with extended features	K = Conformal-coated

PanelView Plus 6 Terminals without Extended Features

Cat. No.			Display		Communication		Input Power	Memory RAM/Nonvolatile ⁽¹⁾
Keypad	Touch	Keypad/Touch	Size	Type	RS-232	Ethernet		
700 Model								
2711P-K7C4D8	2711P-T7C4D8	2711P-B7C4D8	6.5-in.	Color	•	•	DC	512 MB/512 MB
–	2711P-T7C4D8K	–			•	•	DC	512 MB/512 MB
2711P-K7C4A8	2711P-T7C4A8	2711P-B7C4A8			•	•	AC	512 MB/512 MB
1000 Model								
2711P-K10C4D8	2711P-T10C4D8	2711P-B10C4D8	10.4-in.	Color	•	•	DC	512 MB/512 MB
2711P-K10C4A8	2711P-T10C4A8	2711P-B10C4A8			•	•	AC	512 MB/512 MB
1250 Model								
2711P-K12C4D8	2711P-T12C4D8	2711P-B12C4D8	12.1-in.	Color	•	•	DC	512 MB/512 MB
–	2711P-T12C4D8K	–			•	•	DC	512 MB/512 MB
2711P-K12C4A8	2711P-T12C4A8	2711P-B12C4A8			•	•	AC	512 MB/512 MB
1500 Model								
2711P-K15C4D8	2711P-T15C4D8	2711P-B15C4D8	15-in.	Color	•	•	DC	512 MB/512 MB
2711P-K15C4A8	2711P-T15C4A8	2711P-B15C4A8			•	•	AC	512 MB/512 MB

(1) All terminals support FactoryTalk View Machine Edition Station software, version 6.0 or later, and the Windows CE 6.0 operating system without extended features and Microsoft file viewers.

PanelView Plus 6 Terminals with Extended Features

Cat. No.			Display		Communication		Input Power	Memory RAM/Nonvolatile ⁽¹⁾
Keypad	Touch	Keypad/Touch	Size	Type	RS-232	Ethernet		
700 Model								
2711P-K7C4D9	2711P-T7C4D9	2711P-B7C4D9	6.5-in.	Color	•	•	DC	512 MB/512 MB
2711P-K7C4A9	2711P-T7C4A9	2711P-B7C4A9			•	•	AC	512 MB/512 MB
1000 Model								
2711P-K10C4D9	2711P-T10C4D9	2711P-B10C4D9	10.4-in.	Color	•	•	DC	512 MB/512 MB
2711P-K10C4A9	2711P-T10C4A9	2711P-B10C4A9			•	•	AC	512 MB/512 MB
1250 Model								
2711P-K12C4D9	2711P-T12C4D9	2711P-B12C4D9	12.1-in.	Color	•	•	DC	512 MB/512 MB
2711P-K12C4A9	2711P-T12C4A9	2711P-B12C4A9			•	•	AC	512 MB/512 MB
1500 Model								
2711P-K15C4D9	2711P-T15C4D9	2711P-B15C4D9	15-in.	Color	•	•	DC	512 MB/512 MB
2711P-K15C4A9	2711P-T15C4A9	2711P-B15C4A9			•	•	AC	512 MB/512 MB

(1) All terminals support FactoryTalk View Machine Edition Station software, version 6.0 or later, and the Windows CE 6.0 operating system with extended features and Microsoft file viewers.

Accessories

The tables list accessories for the PanelView Plus 6 - 700 to 1500 terminals. Display modules, logic modules, and communication modules can be ordered as separate components for field installation.

Display Modules

Cat. No.	Input Type	Display	Marine Certified	Conformal Coated	Built-in Antiglare Overlay
700 Model					
2711P-RDK7C	Keypad	7-in. color			
2711P-RDK7CK	Keypad			•	
2711P-RDT7C	Touch				
2711P-RDT7CK	Touch			•	
2711P-RDT7CM	Touch		•		
2711P-RDB7C	Keypad/Touch				
2711P-RDB7CK	Keypad/Touch			•	
2711P-RDB7CM	Keypad/Touch		•		
1000 Model					
2711P-RDK10C	Keypad	10.4-in. color			
2711P-RDT10C	Touch				
2711P-RDT10CM	Touch		•		
2711P-RDB10C	Keypad/Touch				
2711P-RDB10CM	Keypad/Touch		•		
1250 Model					
2711P-RDK12C	Keypad	12.1-in. color			
2711P-RDK12CK	Keypad			•	
2711P-RDT12C	Touch				
2711P-RDT12CK	Touch			•	
2711P-RDT12AG	Touch				•
2711P-RDT12H ⁽¹⁾	Touch				
2711P-RDB12C	Keypad/Touch				
2711P-RDB12CK	Keypad/Touch			•	
1500 Model					
2711P-RDK15C	Keypad	15-in. color			
2711P-RDT15C	Touch				
2711P-RDT15AG	Touch				•
2711P-RDB15C	Keypad/Touch				

(1) This catalog number is a high-bright display module, indicated by the H at end of cat. no., that is designed for outdoor applications. The high-bright display module can be used only with DC-powered logic modules.

Logic Modules

Cat. No.	Power Input	Memory RAM/Nonvolatile	Communication	Marine Certified	Conformal Coated	Included Software
Logic Modules without Extended Features						
2711P-RP8A	AC	512 MB/512 MB	<ul style="list-style-type: none"> Ethernet RS-232 Network interface for communication module 	•		<ul style="list-style-type: none"> Windows CE 6.0 operating system without extended features/file viewers FactoryTalk View Machine Edition Station (runtime), version 6.0 or later FactoryTalk ViewPoint software, version 1.2 or later
2711P-RP8D	DC	512 MB/512 MB		•		
2711P-RP8DK	DC	512 MB/512 MB		•	•	
Logic Modules with Extended Features						
2711P-RP9A	AC	512 MB/512 MB	<ul style="list-style-type: none"> Ethernet RS-232 Network interface communication module 	•		<ul style="list-style-type: none"> Windows CE 6.0 operating system with extended features/file viewers FactoryTalk View Machine Edition Station (runtime), version 6.0 or later FactoryTalk ViewPoint software, version 1.2 or later
2711P-RP9D	DC	512 MB/512 MB		•		
2711P-RP9DK	DC	512 MB/512 MB		•	•	

Communication Modules

Cat. No.	Communication				Conformal Coated	Marine Certified
	Ethernet	DH+	DH-485	ControlNet ⁽²⁾		
2711P-RN6		•	•			
2711P-RN6K		•	•		•	
2711P-RN15S				•		•
2711P-RN15SK				•	•	
2711P-RN20 ⁽¹⁾	•					

(1) All terminals have an Ethernet port. The cat. no. 2711P-RN20 module provides an additional Ethernet port.

(2) Scheduled and unscheduled communication.

Cables

Cat. No.	Description	Length
2711C-CBL-UU02	Programming cable that connects the USB device port of the terminal to a USB host port of a computer	2 m (6.5 ft)

Function Key Legend Kits

Cat. No.	PanelView Plus 6 Terminal Model ⁽¹⁾	Description
2711P-RFK7	700 keypad	Blank legend inserts and software
2711P-RFK10	1000 keypad	
2711P-RFK12	1250 keypad	
2711P-RFK15	1500 keypad	

(1) Applies to keypad and keypad/touch-screen terminals.

Secure Digital (SD) Cards

Cat. No.	Description
1784-SD1	1 GB Secure Digital (SD) card
1784-SD2	2 GB Secure Digital (SD) card

Antiglare Overlays

Cat. No. ⁽¹⁾	PanelView Plus 6 Terminal Model	Operator Input		
		Keypad	Touch	Key/Touch
2711P-RGK7	700	•		•
2711P-RGT7			•	
2711P-RGK10	1000	•		•
2711P-RGT10			•	
2711P-RGK12	1250	•		•
2711P-RGT12			•	
2711P-RGK15	1500	•		•
2711P-RGT15			•	

(1) Three overlays are shipped with each catalog number.

Solar Visor

Cat. No.	Description
2711P-RVT12	Solar visor for 1250 high-bright display module, cat. no. 2711P-RDT12H

Mounting Hardware

Cat. No.	Description	Quantity
2711P-RTMC	Mounting clips	8

Battery Replacement

Cat. No.	Description	Quantity
2711P-RY2032	Replacement battery CR2032 coin-cell equivalent battery	1

Power Supply and Power Terminal Blocks

Cat. No.	Description	Quantity
2711P-RSACDIN	DIN-rail power supply, AC-to-DC, 85...265V AC, 47...63 Hz	1
2711P-RTBAC3	AC power terminal block	10
2711P-RTBDC2	2-pin DC power terminal block	10

Backlight Replacements

Cat. No.	PanelView Plus 6 Display Module Size	Series	Number of Backlights
2711P-RL7C	700	A and B	1
2711P-RL7C2		C and D	1
2711P-RL10C	1000	A	1
2711P-RL10C2		B and C	1
2711P-RL12C	1250	A and B	2
2711P-RL12C2		C	1
2711P-RL15C	1500	B	2

Bezel Replacements

Cat. No.	PanelView Plus 6 Terminal Model	Operator Input		
		Keypad	Touch	Key/Touch
2711P-RBK7	700	.		
2711P-RBT7			.	
2711P-RBB7				.
2711P-RBK10	1000	.		
2711P-RBT10			.	
2711P-RBB10				.
2711P-RBK12	1250	.		
2711P-RBT12			.	
2711P-RBT12H ⁽¹⁾			.	
2711P-RBB12				.
2711P-RBK15	1500	.		
2711P-RBT15			.	
2711P-RBB15				.

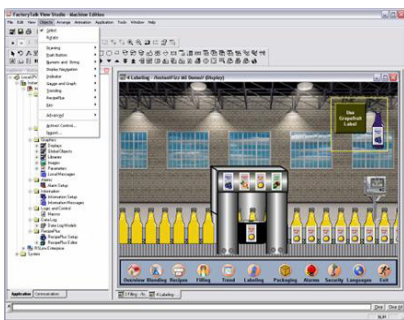
(1) Applies to the cat. no. 2711P-RDT12H 1250 high-bright display module.

FactoryTalk View performance and visibility HMI software, including FactoryTalk View Machine Edition, FactoryTalk View Site Edition, FactoryTalk ViewPoint, and FactoryTalk View Studio are designed with a common look, feel, and navigation to help speed HMI development and training time.

Supporting the Rockwell Automation Integrated Architecture platform, FactoryTalk View software is part of the scalable and unified suite of monitoring and control solutions designed to span machine-level applications through supervisory-level HMI applications across a network. This suite of HMI software products offers you a common development environment, application reuse, and architecture to increase productivity, reduce operation costs, and improve quality.

Combining Rockwell Automation hardware with its software assures comprehensive application support from an industry leader. For a complete list of available HMI software, visit <http://www.rockwellautomation.com/rockwellsoftware>.

FactoryTalk View Machine Edition Software



FactoryTalk View Machine Edition (ME) software supports both open and embedded operator interface solutions for monitoring and controlling individual machines or small processes. This software features a consistent operator interface across multiple platforms, including Microsoft Windows 8.1, 7, Vista, XP, Server, Embedded Compact solutions. FactoryTalk View ME software consists of a design and runtime environment.

FactoryTalk View Studio Software

FactoryTalk View Studio software is the design environment for creating and testing HMI applications, including graphic displays, trends, alarms, and real-time animation. Runtime files can be generated to run on a PanelView™ Plus terminal or industrial computer.

FactoryTalk View ME Station

FactoryTalk View ME Station is the runtime environment for HMI applications. FactoryTalk View ME Station is automatically installed and activated on PanelView Plus terminals. FactoryTalk View ME activation is required when running HMI applications on industrial computers.

FactoryTalk View ME software offers many advantages:

- Alarms to alert operators to conditions requiring immediate action
- Security to restrict operator access to specific displays
- RecipePlus for machine or process recipe management
- Runtime language switching supports up to 20 languages per application
- Global and predefined objects are time and memory savers
- RSLogix™ 5000 and Logix Designer process faceplates
- Ability to convert runtime application to design application
- Parameter passing to facilitate reuse of displays and design efficiency

Software Comparison

TECHNOLOGY: Customer Requirements	FactoryTalk View Site Edition (SE)	FactoryTalk View Machine Edition (ME)	RSView32
Operating systems (32-bit)	<ul style="list-style-type: none"> • Windows 8.1 Professional • Windows 8.1 Enterprise • Windows 8 Professional • Windows 8 Enterprise • Windows 7 Professional SP1 • Windows Server 2008 R2 Standard SP2 • Windows Vista Business SP2 • Windows XP Professional SP3 • Windows Server 2003 R2 Standard SP2 		<ul style="list-style-type: none"> • Windows 7 Professional • Windows XP Professional SP1 or later • Windows Server 2008 Standard SP2 • Windows Vista Business SP1 or later • Windows Vista Home Basic SP1 or later • Windows Server 2003 R2 Standard SP2 • Windows Server 2000 SP4 • Windows 2000 Professional SP4
Operating systems (64-bit)	<ul style="list-style-type: none"> • Windows 8.1 Professional • Windows 8.1 Enterprise • Windows 8 Professional • Windows 8 Enterprise • Windows 7 Professional SP1 • Windows 7 Enterprise SP1 • Windows 7 Ultimate SP1 • Windows Server 2012 Standard • Windows Server 2012 R2 Standard • Windows Server 2008 Standard SP2 • Windows Server 2008 R2 Enterprise SP1 • Windows Vista SP2⁽¹⁾ • Windows XP Professional SP3 • Windows Server 2008 R2 Standard SP21 		
Embedded platforms		X	
Windows domain security	X	X	X
OPC/ActiveX	X	X	X
FactoryTalk enabled	X	X	X
Server-side VBA			X
Client-side VBA	X		

(1) You can only use Windows Vista to host stand-alone or distribution applications that run on a single computer, or run FactoryTalk View SE Client or FactoryTalk View Studio software that connect to an application hosted on the same computer or a remote computer.

ARCHITECTURE: Customer Requirements	FactoryTalk View Site Edition		FactoryTalk View Machine Edition	RSView32
Primary application	Supervisory level: single-station or multiple-server, multiple-client		Machine level: single-station	Supervisory level; single station or single server, multiple client
Tag-based HMI	X		X	X
Direct referencing	X		X	
	Network (Distributed)	Local		
Max number of servers/clients	10/50			1/20
FactoryTalk ViewPoint	X	X	X ⁽¹⁾	X
RSView32 web server				X
Thin clients (terminal services)	X			X
Multi-user development	X			
Remote configuration at runtime	X			
Redundancy – data server	X			
Redundancy – HMI server	X			Active display

(1) Supported only on PanelView Plus 6 and PanelView Plus 7 terminals.

FEATURES: Customer Requirements	FactoryTalk View Site Edition	FactoryTalk View Machine Edition	RSView32
Animation - visibility, color, fill, horizontal and vertical position, width, height, rotation, horizontal and vertical slider, and more	And touch	No touch animation	And touch
Alarms	<ul style="list-style-type: none"> FactoryTalk alarms and events HMI alarms Digital and analog Defined alarm severities Alarm log 	<ul style="list-style-type: none"> Tag-based (from controller) Alarm log 	<ul style="list-style-type: none"> Tag-based Digital and analog Definable alarm severities Alarm log
Data logging	<ul style="list-style-type: none"> 20 data log models per project Each with up to 10,000 tags Log to ODBC or proprietary database 	<ul style="list-style-type: none"> 1 data log model per project With up to 100 tags 1,000 K records max Export to dbf 	<ul style="list-style-type: none"> 20 plus data log models per project Each with up to 10,000 tags Log to ODBC or proprietary database
Trend version	TrendX 4.0	TrendX 4.0 subset	TrendX 3.1 and native
Security	<ul style="list-style-type: none"> Security assigned to tags, graphic displays, macros, commands, OLE objects Local or Windows security 	<ul style="list-style-type: none"> Display-based Local or Windows security 	<ul style="list-style-type: none"> Security assigned to tags, graphic displays, macros, commands, OLE objects Local or Windows security
Other features	<ul style="list-style-type: none"> Test run macros Derived tags Event detector 	<ul style="list-style-type: none"> Test run macros Derived tags S/BTest RunMacrosDerived Tags 	<ul style="list-style-type: none"> Test run macros Derived tags Event detector
Price model	<ul style="list-style-type: none"> Display-based pricing Multiple levels 	<ul style="list-style-type: none"> Included with PanelView Plus 6 or display-based pricing Multiple levels for FactoryTalk View ME Station 	<ul style="list-style-type: none"> Tag-based pricing Multiple levels

Software Selection

FactoryTalk View Machine Edition (ME) Software

Cat. No.	Description
To choose your preferred language, replace the xx in the catalog number with EN for English, DE for German, FR for French, JP for Japanese, or ZH for Chinese.	
9701-VWSTMxxE	FactoryTalk View Studio for Machine Edition - Configuration software to develop and test machine level HMI applications. FactoryTalk View Machine Edition includes RSLinx Enterprise and KEPServer Enterprise software.

FactoryTalk View Machine Edition (ME) Station

Cat. No.	Description ^{(1) (2)}
To choose your preferred language, replace the xx in the catalog number with EN for English, DE for German, FR for French, JP for Japanese, or ZH for Chinese.	
9701-VWMR015AxxE	FactoryTalk View ME Station runtime 15 displays
9701-VWMR030AxxE	FactoryTalk View ME Station runtime 30 displays
9701-VWMR075AxxE	FactoryTalk View ME Station runtime 75 displays
9701-VWMR250AxxE	FactoryTalk View ME Station runtime 250 displays RS-232 operating cable, 9-pin D Shell to 8-pin Mini DIN

(1) FactoryTalk View Machine Edition Station is the runtime environment where FactoryTalk View ME projects created with FactoryTalk View Studio software are run on any computer with a Windows operating system.

(2) FactoryTalk View ME Station Runtime is included with all PanelView Plus 6 or PanelView Plus 7 terminals.

FactoryTalk View Site Edition (SE) Software

Cat. No.	Description ⁽¹⁾
To choose your preferred language, replace the xx in the catalog number with EN for English, DE for German, FR for French, JP for Japanese, or ZH for Chinese.	
9701-VWSTxxE	FactoryTalk View Studio for FactoryTalk View Enterprise- configuration software to develop and test machine level and supervisory level HMI applications
9701-VWSCWAxxE	FactoryTalk View SE Client - software to view and interact with FactoryTalk View SE Servers ⁽²⁾
9701-VWSCRAxxE	FactoryTalk View SE View Client - provides read-only capabilities
9701-VWSB015AxxE	FactoryTalk View SE Station 15 display
9701-VWSB025AxxE	FactoryTalk View SE Station 25 display
9701-VWSB100AxxE	FactoryTalk View SE Station 100 display
9701-VWSB250AxxE	FactoryTalk View SE Station 250 display
9701-VWSB000AxxE	FactoryTalk View SE Station unlimited display
9701-VWSS025LxxE	FactoryTalk View SE Server 25 display with RSLinx Enterprise
9701-VWSS100LxxE	FactoryTalk View SE Server 100 display with RSLinx Enterprise
9701-VWSS250LxxE	FactoryTalk View SE Server 250 display with RSLinx Enterprise
9701-VWSS000LxxE	FactoryTalk View SE Server unlimited display with RSLinx Enterprise

(1) FactoryTalk View Station and FactoryTalk View SE Server include RSLinx Enterprise and RSLinx Classic software, version 3.70.

(2) FactoryTalk View SE Server stores HMI project components and serves to clients, for example, graphic displays.